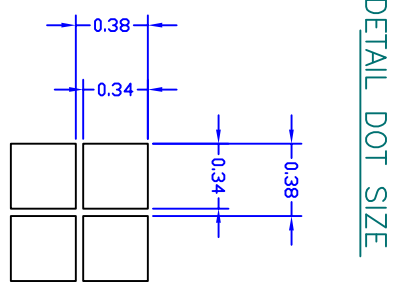
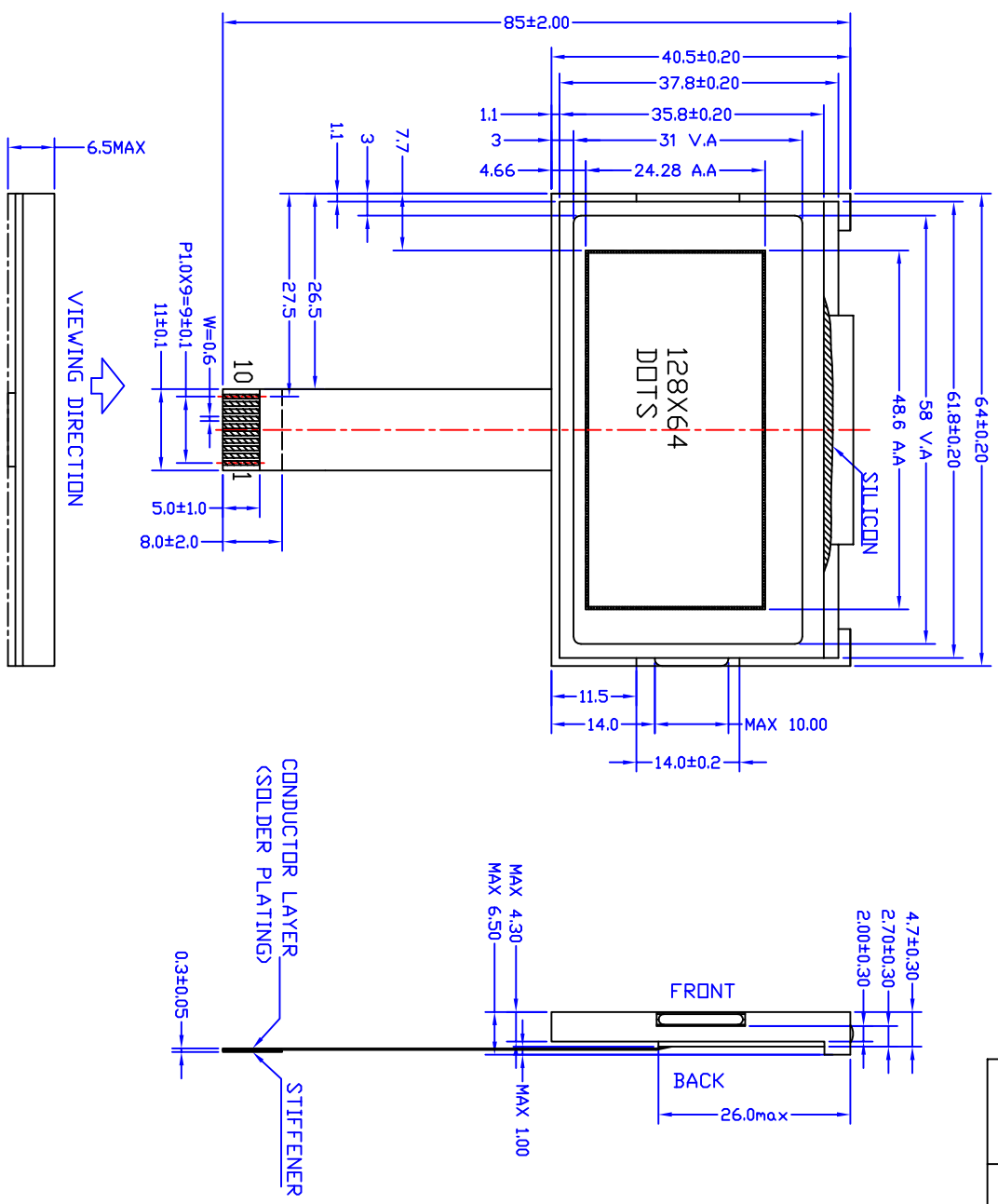


REV	DESCRIPTION:	DATE

**PIN ASSIGNMENT**

1	VSS
2	VDD
3	V0
4	/RES
5	/CS1
6	RS
7	SCLK
8	SID
9	A
10	K



- SPECIFICATION:**
- 1). DRIVE METHOD: 1/65DUTY, 1/9BIAS, VLCD: 10.2V VDD:3.3V
  - 2). VIEWING DIRECTION: 6 O'CLOCK
  - 3). DISPLAY TYPE: STN,TRANSFLEACTIVE/POSITIVE
  - 4). OPERATING TEMP: -20C~+70C°
  - 5). STORAGE TEMP: -30C~+80C°
  - 6). USE IC: S6B0713TB-03
  - 7). DIMENSIONS WITH MARK "\*" ARE IMPORTANT WITH MARK "()" ARE REFERENCED

Model Name: OCU-G12864F00-02		DRAWN NO.		SCALE: 1:1	
GENERAL TOL: ± 0.3		DATE		UNIT: mm	
APPROVALS		DATE		Page: 1-1	
DWN:		SIZE:	A4		
CHK:					
App:					

**OCULAR ENTERPRISES**